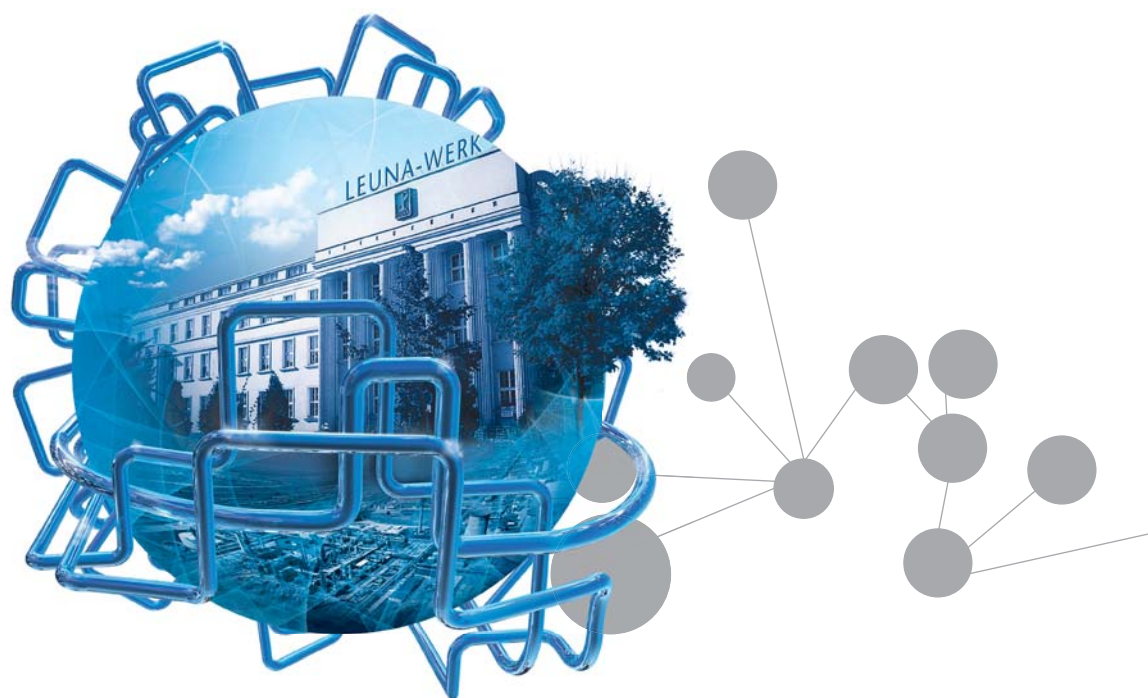
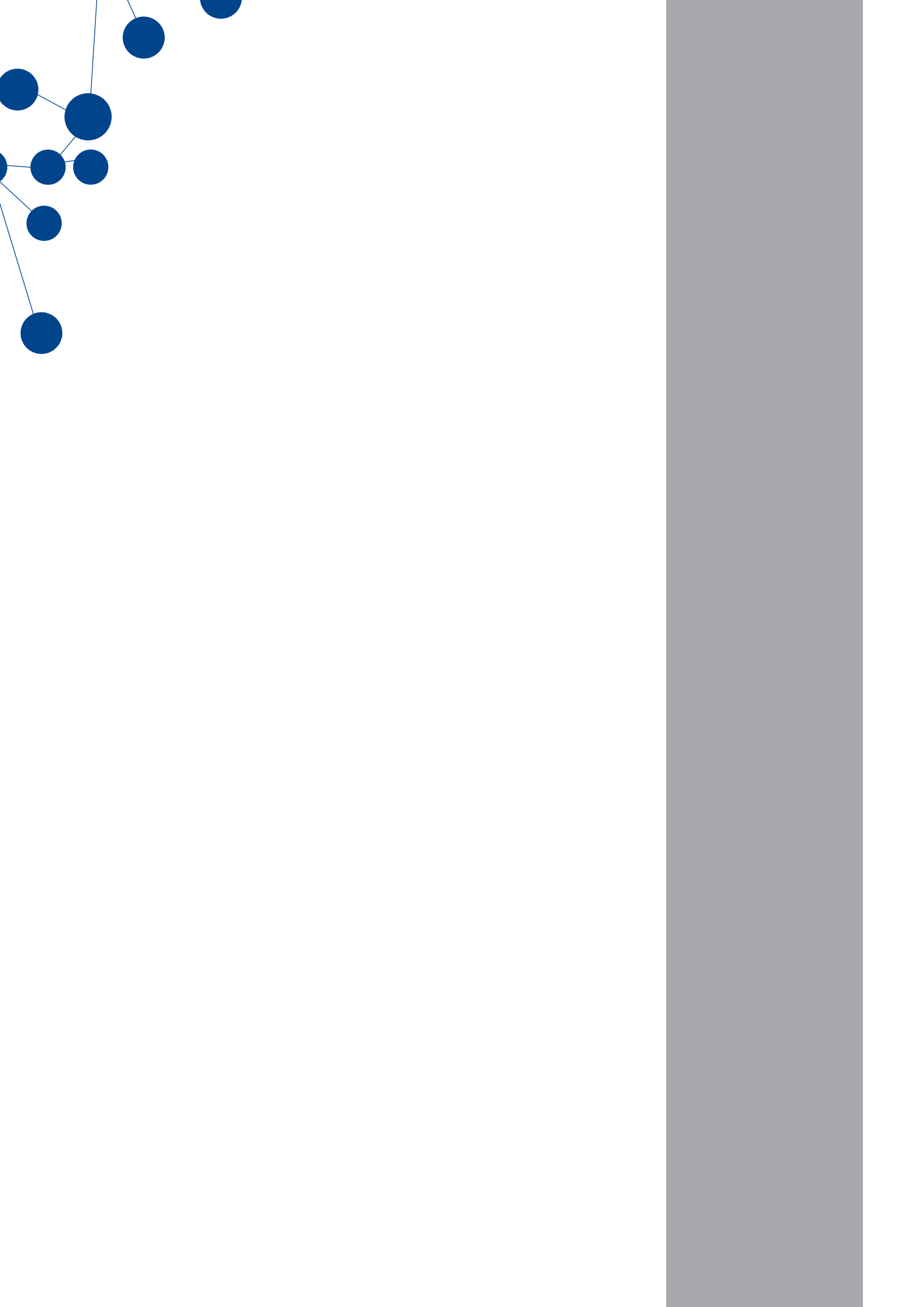




INFRALEUNA®



**WELCOME TO THE  
LEUNA CHEMICAL COMPLEX!**



# CONTENTS

LEUNA – dynamic location for Investors	6
Tradition & Innovation	8
Ideal Location for Smart Strategists	10
Central Location in Europe	11
Leuna Chemical Complex in Numbers	13
The Infrastructure – Our Plus for all Investors	14
Network Synergies	16
Companies on the Leuna Chemical Complex	19
Service Providers on the Leuna Chemical Complex	25
Research Facilities on the Leuna Chemical Complex	29
The Complex	30
InfraLeuna – Your Services Partner	32
All-around Supply	34
People & Region	40
Support for Investors	44
Contact	47
Answers & Offers from one Source	48
Family-friendly Company Policy	49
Contact details of Producers, Service Providers, Research Facilities	50





6,500,000,000

Approx. € 6.5 billion has been invested in the Leuna chemical complex since 1990.







# LEUNA – DYNAMIC LOCATION FOR INVESTORS

## YOU ...

- are searching for a suitable manufacturing location?
- value a fully developed and complex raw material network?
- expect an efficient infrastructure?
- expect substantial investment incentives, employment support?
- want, first and foremost, to concentrate on your production?

## WE ...

- can offer a ready and developed location in a self-contained industrial complex in Central Germany, one of the most dynamic economic regions in Europe.
- have the synergy potentials you need: with companies already onsite or with other chemical companies in the immediate vicinity.
- have a need-based adaptable infrastructure which makes your company's investment quantifiable.
- are based in an EU development area where corresponding subsidies for investors are available.
- make it possible, through inexpensive services tailored to your company's individual needs, to outsource as many non-core activities as you wish.





Invest in the future  
of your Business.

## INVEST IN LEUNA!

Located in the dynamic central German industrial region of Leipzig-Halle, Leuna sits at the center of a fully economically developed environment. Since 1990, renowned companies such as ARKEMA, BASF, DOMO, Eastman, Innospec, Linde, and TOTAL, as well as numerous medium-sized firms, have decided on and invested more than 6.5 billion Euros in the Leuna Chemical Complex to date. Further large investments are currently being made or planned and guarantee a dynamic that is exemplary in the European Union.

The Leuna chemical complex, with its long-standing tradition of outstanding chemical production, features production ranging from specialty to bulk chemicals, attractive to both mid-sized and larger chemical companies. There are excellent opportunities for growth-oriented chemical companies and chemistry-related service providers to expand their position.

THE HISTORY OF  
LEUNA IS  
CHARACTERIZED BY  
SUPERLATIVES ...

## TRADITION & INNOVATION

### MORE THAN 100 YEARS OF CHEMISTRY IN LEUNA

The smart and forward-thinking plans of the world-renowned chemist Carl Bosch quickly put Leuna on the international map.

After the introduction of commercial ammonia synthesis, methanol soon followed in 1923 on a world-scale facilitated by the high-pressure process.

At the end of the 1920's Leuna became a production site for the mineral oil industry when Matthias Pier developed a brown coal hydrogenation process for the manufacture of synthetic fuels.

The year 1938 became a milestone in history. Women around the world had a reason to celebrate: in that year the synthesis of caprolactam leading to Perlon (nylon) was achieved in Leuna.

The series of successes from the introduction of large-scale industrial processes knew no end. Until the Second World War this stronghold of technology

evolved into the biggest company of the German chemical industry. A fine example of one of these successes is the world's first production plant for the manufacturing of synthetic surfactants which was commissioned in 1942.

Even after the war Leuna remained a synonym for "chemistry".

Today's investors onsite are still benefiting from connections initiated under the East German flag. The excellent raw material supply network includes crude oil and natural gas from Russia and ethylene from the Czech Republic.

Since German reunification in 1990, a new chapter in the history of the Leuna chemical complex has begun. Company partnerships, forged in the foundation years, have once again re-established themselves here to mutual advantage. Linde AG is one example of this: In 1916, it constructed the first air separation unit in Leuna.







**... the future will  
be no less exciting.**

## **CHEMISTRY IN LEUNA FOR THE FUTURE**

The development of the Leuna chemical complex is a barometer for the overall growth of the state of Saxony-Anhalt.

Public investment grants have played a considerable role in supporting the establishment of new facilities by potential investors. Here, state-of-the-art infrastructure is available at sustainable and favourable conditions with the support of policy-makers and authorities. Working in the investors' favour – environmental permit approval for new plants which are usually very short in comparison to European standards.

Because of the chemical industrial base in the region, there is a high concentration of experienced and qualified experts. At present approximately 10,000 people work at the Leuna complex. Tomorrow's specialists are being educated to international standards at the renowned universities and colleges in Leipzig, Halle and Merseburg. Together with experienced and skilled employees they ensure the innovation potential of their companies.

This is not the only aspect that guarantees a "Creativity in chemistry". The neighbouring city Leipzig is well-known for its cosmopolitanism.



# IDEAL LOCATION FOR SMART STRATEGISTS

## THE LOCATION

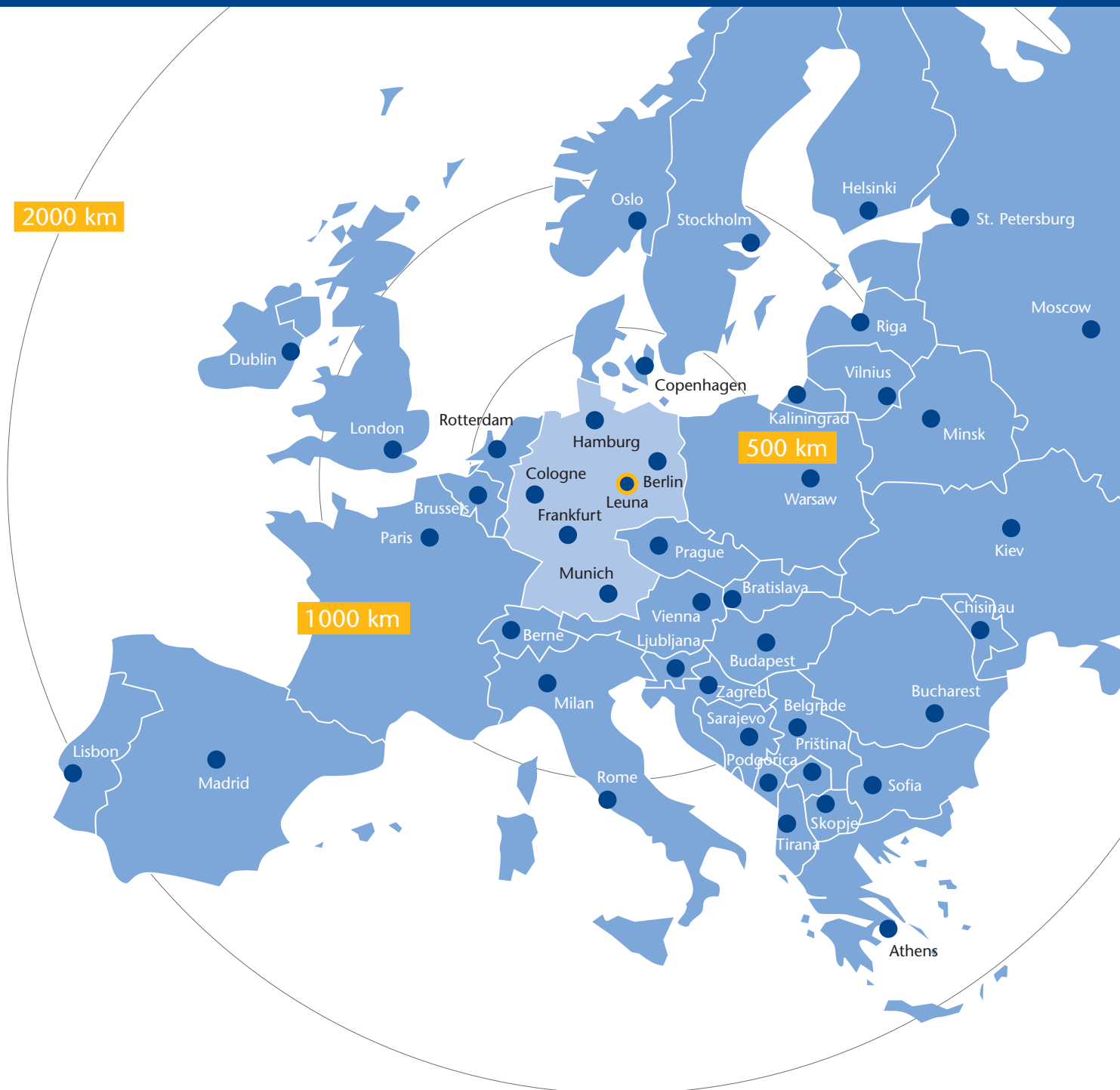
Situated in the dynamic industrial region of Leipzig-Halle in Central Germany, Leuna is a Focal Point within a fully developed business environment. Located in the heart of Europe, it enables not only interaction with Western industrialized countries but also with the states of Central and Eastern Europe, providing interesting market opportunities.



LEUNA IS AN INTERNATIONAL WORLD-SCALE CHEMICAL COMPLEX IN AN OUTSTANDING STRATEGIC LOCATION



# CENTRAL LOCATION IN EUROPE







# THE LEUNA CHEMICAL COMPLEX IN NUMBERS

## FACTS & FIGURES



**70 percent** of the produced goods leave the site by rail



**95 percent** is the average reduction of the environmental impact at the chemical complex since 1989



**600 kilometers** installed pipelines between the companies onsite guarantee short transport times



**1,300 hectares** is the area of the chemical complex, which is about 1,820 football pitches



**5,000 vehicles** travel within the complex daily



**10,000 workers** are employed on the Leuna chemical complex



**280,000 tank cars** are maneuvered at the site annually – joined together that train would range from Leuna to Novosibirsk (4,480 km)



**12,000,000 tons** of goods are produced at the site per year



**6,500,000,000 Euro** have been invested in the chemical complex since 1990

# THE INFRASTRUCTURE – OUR PLUS FOR ALL INVESTORS

## ACCESS TO THE WORLD



### Air Connections

The international airport Leipzig/Halle is located within 25 km of the Leuna chemical complex. Two heli-pads onsite enable access by helicopter.



### Motorways

Leuna is directly linked to the motorways A 38 Leipzig-Göttingen, A9 Berlin-Munich and A14 Leipzig-Magdeburg-Hanover.



### Railways

The Leuna Chemical Complex has an onsite rail network with access to the main lines of Deutsche Bahn AG for the carriage of goods. Passenger traffic is catered for through the major railway stations in the immediate vicinity.



### Ships

Four inland ports are available for freight traffic by ship: Halle/Trotha 23 km away, Aken 80 km, Haldensleben 120 km and Magdeburg 140 km from Leuna.





**The Leuna site provides optimum conditions for your production:**

**Here you will find the conditions which guarantee quick start-up times.**

## **ADVANTAGES DUE TO SYNERGIES**

Pipelines supply Leuna with crude oil from oilfields in Russia. InfraLeuna GmbH gets natural gas via direct connection to the national gas pipeline grid.

InfraLeuna-operated power plants provide steam and electric energy at various pressure ratings and voltage levels, to customers onsite. Distribution is through InfraLeuna supply networks and grids. InfraLeuna GmbH also manages the water supply and the waste water disposal.

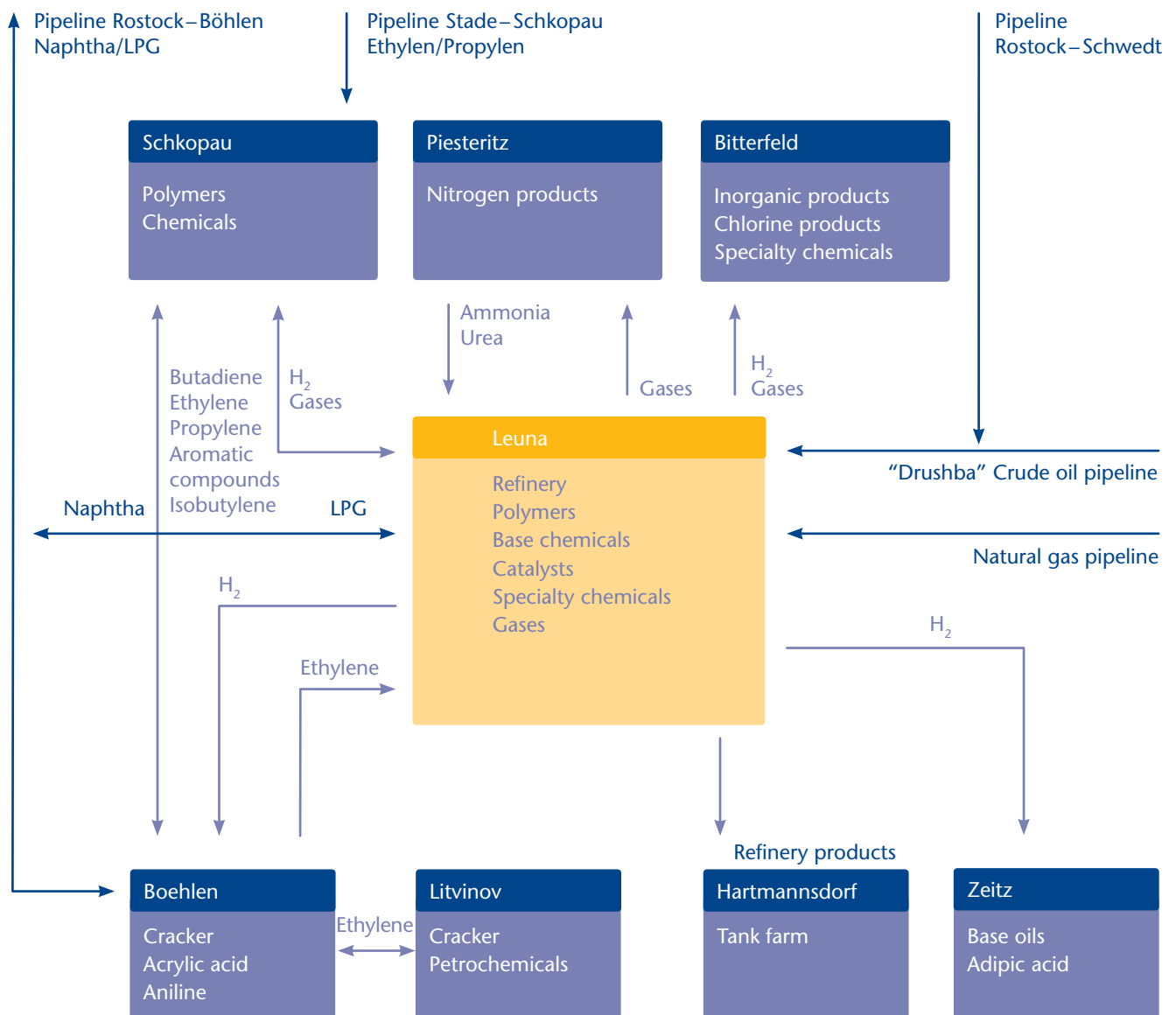
A modern road network of 40 kilometers, 90 kilometers of railway tracks and 600 kilometers of pipelines between the companies onsite minimize distances and ensure rapid transfers within the chemical complex.

The comprehensive infrastructural and service strategy specifically designed for Leuna will allow chemical enterprises to concentrate on their core competencies thus ensuring highly efficient operations.

This distinctive industry service structure ensures powerful and cost-effective service.

# SYNERGIES OF THE NETWORK

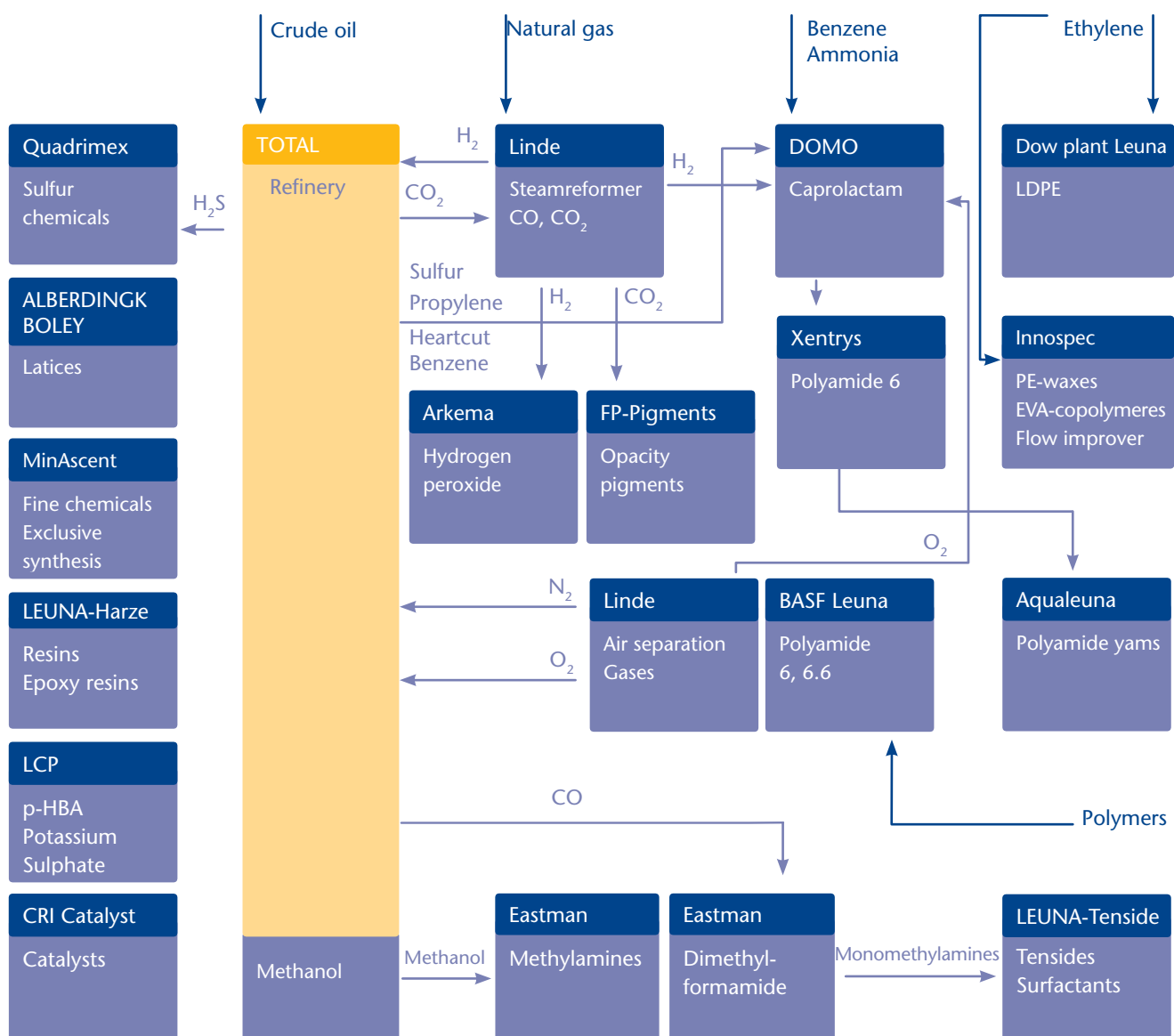
## REGIONAL NETWORK



Leuna offers you a fully developed and complex raw material network:

Either with the companies already onsite or those located nearby on other chemical sites.

## SITE INTERNAL NETWORK







# THE CHEMICAL PRODUCERS ON THE LEUNA CHEMICAL COMPLEX



## ADDINOL Lube Oil GmbH

ADDINOL Lube Oil GmbH has been developing, producing and marketing high performance lubricants for the automotive sector and industrial applications for more than 80 years. Since 2000 the company is located at the chemical site Leuna. In 2007 a state-of-the-art production and filling plant was put into operation. Innovative solutions, quality thinking, flexibility and customer care are the basis for a constantly growing market share in Germany and in more than 70 countries worldwide.



## Agrofert Deutschland GmbH

Agrofert Deutschland GmbH deals in fertilizers and markets agricultural products as well as AdBlue, the NOx reduction agent. In addition to the new company headquarters in the Agro-Chemie Park Lutherstadt Wittenberg (Saxony-Anhalt), there are seven other warehouse sites in Saxony. The agricultural trader's facilities at their 25,000 m<sup>2</sup> Leuna location, where innovative liquid fertilizers are produced, have been expanding since May 2013. The modern tank farm can store approximately 14,000 tons of liquid product and bulk goods containers allow for the intermediate storage of about 1,000 tons of solid goods. Agrofert Deutschland is a wholly-owned subsidiary of SKW Stickstoffwerke Piesteritz GmbH, which in turn belongs to the Czech Agrofert Group, one of the largest groups of companies in the Czech and Slovak agricultural and nutritional goods sector with more than 35,000 employees.



## ALBERDINGK BOLEY Leuna GmbH

Alberdingk Boley Leuna GmbH belongs to the company's group Alberdingk Boley GmbH with its headquarter situated in Krefeld, Germany. The privately owned, medium-sized company is acting worldwide. Alberdingk Boley produces water-based binders which refine, refurbish, link and protect surfaces of all substrates and thus has a leading position in the polymerization of solvent-free polyurethane- and acrylate-dispersions. Further sites are located at Kerpen, Germany, Greensboro (USA) and Shenzhen (China). At the production site Leuna, water-based dispersions are produced for various applications, such as the fabrication of paints and coatings, adhesives and construction materials. Alberdingk Boley Leuna GmbH is certified according to DIN EN ISO 9001, ISO 14001 as well as ISO 50001.



## Aqualeuna G.m.b.H.

Aqualeuna GmbH produces bulked continuous filament (BCF) yarns from Nylon 6 for textile floor coverings. The yarns are predominantly intended for three different fields of application: for furnishing commercial objects, for residential space and for the automotive industry. Aqualeuna GmbH has been a member company of the Aquafil Group since 2013 which introduced various measures a couple of years ago to reduce environmental pollution caused by the production process and to develop more and more sustainable products by having due regard to the interests of all stakeholders involved at the locations concerned. The ECONYL® regeneration system is the flagship of this project; the process uses 100 % of regenerated Nylon 6 from industrial and post-consumer waste.



#### ARKEMA GmbH

As a designer of materials and innovative solutions, Arkema creates products for new applications that contribute to the performance improvement of their customers. The company is active in the areas of High Performance Materials, Industrial Specialties, and Coating Solutions. In Arkema's research centers in North America, France, and Asia, the focus is placed on innovations in lightweight construction materials, renewable raw materials, energy production and storage, water treatment, electronics, and 3D printing. The latest solutions can be found on [www.arkema.com](http://www.arkema.com). In Leuna, Arkema produces hydrogen peroxide in aqueous solutions under the name "Albone". The production facility was put into operation in 1997.



#### BASF Leuna GmbH

BASF Leuna GmbH produces Polyamide 6 and Polyamide 6.6 compounds under the name Ultramid®. The company is part of the 50-year tradition of synthetic material production on the Leuna Chemical Complex. The current range of products includes plastics for the automobile, electric/electronic, mechanical engineering, construction, and furniture industries, as well as the sport and leisure activities sectors.



#### CRI Catalyst Leuna GmbH

In 1998, CRI Catalyst Leuna GmbH, a company of the CRI/CRITERION Group, took over the catalyst production of the Leuna Works. Catalysts count among the traditional products from Leuna, with the first commercial catalyst being produced here in the early 1920s. CRI Catalyst Leuna GmbH develops, produces and markets catalysts for the chemical and petro-chemical industries. The most important fields of application for catalysts are selective hydration, cleaning processes and the Fischer-Tropsch synthesis.



#### DOMO Caproleuna GmbH

Apart from Xentrys Leuna GmbH, DOMO Caproleuna GmbH is a member company of DOMO Chemicals, a customer-oriented uniquely integrated manufacturer of polyamide 6. The company is internationally active in the fields of polyamide 6 semi-finished products (such as caprolactam, cyclohexanone, phenol, acetone), polyamide 6 granulate, technical plastic made from polyamide 6, fertilizer and flexible packaging foil made from polyamide 6 as well as in the distribution sector for petro-chemical products. DOMO Caproleuna's integrated production at its Leuna location includes cumene, phenol, cyclohexanone and caprolactam. The product portfolio also covers acetone, sulphuric acid, ammonium sulphate, as well as main products and products with which DOMO Caproleuna has established itself in the market. In addition to that, the company markets the polyamide 6 produced by Xentrys Leuna GmbH under the brand name of DOMAMID® at international level.



#### Dow Olefinverbund GmbH

The Dow Olefinverbund GmbH with its plants in Schkopau, Leuna, Teutschenthal (Saxony-Anhalt) and Boehlen (Saxony) is a 100 % subsidiary of the American based Dow Chemical Company. At the chemical site Leuna the company produces low density polyethylene (LDPE) for packaging- and protective films as well as High Purity (highly purified) LDPE for special applications in the cable industry.



# EASTMAN

## Eastman Chemical Company

Taminco Germany has been a subsidiary of Eastman Chemical Company since December 2014. Eastman is a globally active specialty chemicals company. Their portfolio includes various specialized business areas. Eastman works together with customers to create innovative products and solutions with a strong focus on safety and sustainability. Market-oriented procedures are supported by the most modern technology platforms and market leadership in attractive end markets such as transportation, construction, and consumables. As a globally positioned company, Eastman serves customers in roughly 100 countries. The company is headquartered in Kingsport, Tennessee (USA), and employs approximately 14,000 people across the globe.



## EW Biotech GmbH

As a subsidiary of EW Nutrition GmbH, EW Biotech GmbH acquired the former ThyssenKrupp Multi-purpose Biotech Facility in Leuna, Germany. In addition to scale-up and toll manufacturing, the facility allows for extended research and development activities in the field of bio-based chemicals. This in turn allows customers and partners to leap from the lab to industrial scale production.



## FP-Pigments GmbH

FP-Pigments offers high performance pigments for all sectors of industries, particularly for the paint-, coatings-, plastics-, paper-, and printing ink industry. Due to the new production technology developed by FPP, the products get an unique character. The white opacity pigment, for example, shows excellent product features and has due to the partly or even completely replacement of titanium oxide an outstanding price/performance ratio.



## GHC Gerling, Holz & Co. Handels GmbH

The GHC Gerling, Holz & Co. Handels GmbH has been focusing on the worldwide distribution of chemical special gases for over 100 years. The products are part of chemical synthesis for the production of specialty and fine chemicals respectively of pharmaceuticals. The core competence includes also the development of customized gas cylinders and plants. At the Leuna chemical complex the company produces and distributes under pressure liquefied hydrogen sulfide in different purities. GHC expands its capacities and activities in Leuna which is possible due to the acquisition of production plants and storage spaces.



## Innospec Leuna GmbH

Innospec, a worldwide acting and fast growing company group of the specialty chemistry, operates a high pressure polymerization plant at the chemical site Leuna. Based on ethylene special products of the categories EVA, PE waxes and diesel additives are manufactured. 100 employees generate a turnover of 40 million euro with 60 % export and aim the production at the requirements of the customers. Innospec Leuna has a customer-oriented medium-sized character as well as an open company structure and uses the integration into the company group for the further development of their activities.



## LCP Leuna Carboxylation Plant GmbH

The LCP Leuna Carboxylation Plant GmbH continues the longtime tradition of the Leuna-Werke in the production and sales of Hydroxybenzoicacids. The carboxylation plant was acquired by the Japanese Polyplastics Co., Ltd. in September 2012. In October 2005 the production of para-Hydroxybenzoicacid (p-HBA) started, which is a basic for manufacturing of cosmetic products and liquid crystal polymers. A further product of LCP GmbH is technical pure Potassium Sulphate > 99,8 % which is used in technical applications with high requirements in quality. It is our mission to be the supplier of choice for our customers and continuously invest future oriented to secure our key competitive advantage.



#### LEUNA-Harze GmbH

In modern manufacturing facilities, LEUNA-Harze GmbH continues the long tradition of the Leuna Works: the production and distribution of epoxy resin systems. The EPILOX® epoxy resin systems are applied in the construction and coatings industries, for the production of advanced composites, and in the electric/electronic sector. The investment in a production plant for curing agents in 2015 clearly strengthened the company's market position as one of the leading system providers in Europe. In 2017 another new plant for the production of Bisphenol A/F epoxy resins was put into operation.



#### LEUNA-Tenside GmbH Surfactants & Intermediates

#### LEUNA-Tenside GmbH

LEUNA-Tenside GmbH emerged in 1995 by Management-Buy-Out of a sector of the former Leuna-Werke and has experience in the area of surfactant chemistry for more than 6 decades. Nowadays, they run several chemical plants: trans esterification (production of methyl ester), fractionation/distillation, high pressure hydrogenation (production of fatty alcohols), ethoxylation (production of nonionic tensides), fatty acid condensation (production of taurates and isethionates), sulfo-chlorination (production of alkane sulphonates and sulfonyl chlorides), chlorination (production of chlorinated paraffins).



#### Linde AG | Geschäftsbereich Linde Gas

Since 1990 Linde AG's division Linde Gas, has been producing and providing technical gases onsite. Being the largest gas centre of Linde AG in Europe, Linde supplies hydrogen, oxygen, nitrogen, CO, CO<sub>2</sub>, specialty gases such as argon, other inert gases and gas mixtures in all distribution forms such as pipelines, tank-trucks and bottles to customers at the Leuna complex and in Central-Germany. With the pipeline connections between the chemical sites Bitterfeld, Piesteritz, Schkopau, Boehlen and Zeitz Linde as a reliable partner supporting growth and new demands.



#### Lord Germany Feinchemie GmbH

Lord Germany Feinchemie GmbH was taken over from BioChem Leuna in 2015 and integrated as a new entity into the Cary-based LORD Corporation. The company has produced and marketed reactive crosslinkers and vulcanization accelerators for the industrial processing of rubber since 2009. LORD is a growing private American enterprise as well as international market and technology leader in the fields of adhesives, coatings, vibration and motion control as well as magnetically reactive technologies. Adhesive agents for rubber and metal as well as elastomer coatings for the automotive, aviation and other industries are produced and/or marketed in the immediate vicinity of the customers. The company also focuses its activities on cold setting 2K metal and composite adhesives.



#### MinAscent Leuna Production GmbH

MinAscent Leuna Production GmbH has its origin in the research department of the former Leuna Works which continued its existence as a spin-off company. With its comprehensive laboratory, piloting and production facilities, MinAscent can support its customers in their efforts to develop, upscale and implement the production of multi-stage syntheses for the manufacture of active substances as well as pre-products and semi-finished products for the pharmaceutical industry and, in addition to that, for fine chemicals for other markets and fields of application. MinAscent Leuna Production GmbH is a subsidiary of the Minafin Group, a leading manufacturer of fine chemicals and semi-finished pharmaceutical products as well as active substances.



#### MVV Umwelt Asset GmbH Standort TREA Leuna

The company is a 100% subsidiary of the Mannheim-based MVV Energie AG. TREA stands for thermal waste treatment and energy generation plant. The thermal waste treatment plant recycles residential, commercial and industrial waste. The quantities of waste supplied to the plant will be thermally recycled with a high degree of efficiency in the power plant. The steam generated in the boiler will either be used for the generation of power or fed into the steam network of InfraLeuna, the operator of the chemical park.



#### Quadrimerx Sulfur Chemicals GmbH & Co. KG

Since 01.05.2010, Quadrimerx Sulfur Chemicals GmbH & Co. KG assumed the plants of sulphur chemistry onsite for the production of ammonium sulfide, sodium hydrosulfide (liquid, melt and chips), sodium sulfide (liquid). These products apply inter alia for the selective heavy metal precipitation (i.e. nickel, cobalt, vanadium), in tanneries, exhaust gas purification and sewage treatment, for the production of thiocarboxylic acids, thioplasts and sulphur dyes. Furthermore, Quadrimerx operates as approved disposer in the waste management to exploit sulfide-containing wastes. The company employs 20 people.



#### STEAG GmbH

STEAG GmbH has stood for efficient and secure energy supply for more than 80 years, both in Germany and abroad. As an experienced partner, STEAG supports customers comprehensively during all phases of energy supply. STEAG designs, develops, implements and operates highly efficient power plants and market their energy and by-products. In addition to customized electricity and heat supply solutions, STEAG offers a wide range of energy-related services.



#### TOTAL Raffinerie Mitteldeutschland GmbH

One of the most modern European refineries, TOTAL Raffinerie Mitteldeutschland GmbH, is located on the Leuna Chemical Complex. Since fall 1997, the company has been producing top-quality mineral oil products here. The refinery in Leuna can process about 12 million tons of predominantly Russian crude oil per year into fuel, heating oil, liquid gas, propylene, bitumen, naphtha, and methanol. The TOTAL refinery covers ca. 10 percent of the fuel demand in Germany and mainly supplies central Germany. Additionally, with its annual capacity of about 700,000 t, the TOTAL refinery is the second largest methanol producer in Europe.



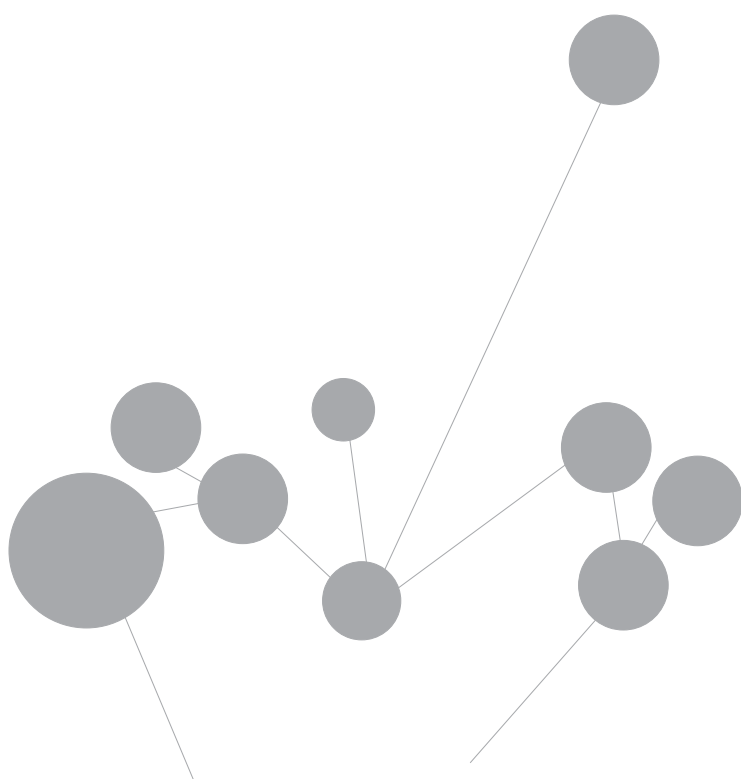
#### WEPA Leuna GmbH

WEPA Leuna GmbH is a 100% subsidiary of the WEPA Group which is headquartered in Arnsberg. With its highly modern machinery and its more than 200 employees at this location, the company manufactures toilet paper and paper towels predominantly for trademark labels. WEPA employs a total workforce of approx. 3,000 at 12 locations in Germany, Italy, France and Poland, Holland as well as in a Joint Venture in Britain. The family-run business is Europe's third largest manufacturer of sanitary paper and supplies both food retailers and wholesalers in Europe with a complete range of top-quality kitchen rolls and paper tissues, cosmetic tissues, napkins, toilet paper, paper towels, industrial rolls and dispenser systems.



#### Xentrys Leuna GmbH

Xentry Leuna GmbH is a company of DOMO Chemicals, an internationally active group of companies. Since 1994, the company has produced polyamide 6 under the brand name of DOMAMID® at its Leuna site. This is a high-quality polymer which is used in the automotive industry, for foil production as well as in textile and carpet yarns.







# SERVICE PROVIDERS ON THE LEUNA CHEMICAL COMPLEX



## **B & G Computer GmbH**

The B&G Computer GmbH is a complete service provider in the field of IT/TK. Project development, construction and service of corporate networks are the core focus of the company. Distribution of soft- and hardware, software development and -adaptation to customer wishes belong to their portfolio. The implementation of TK-facilities incl. terminals, particularly for small and medium-sized enterprises complete the offer.



## **BILFINGER**

### **Bilfinger Maintenance GmbH**

With its more than 2,200 employees, Bilfinger Maintenance GmbH is the leading full-service maintenance company for the chemical, petro-chemical, oil, gas, fine chemical, pharmaceutical and energy industries. The company is established at Leuna but pursues its activities all over Germany. Its range of services comprises the continuous plant maintenance including the planning for it, the scheduling of plant downtimes, the production of components as well as consulting and organizational development in the fields of maintenance and plant management.



## **BILFINGER**

### **Bilfinger OKI Isolertechnik GmbH**

Bilfinger OKI Isolertechnik GmbH is a subsidiary of Bilfinger SE, one of the leading industrial service providers in Europe. Located at the Leuna complex, Bilfinger OKI Isolertechnik GmbH is a competent service provider in the fields of heat and cold insulation, noise protection, scaffolding and corrosion protection. Some 1,000 employees of the company are assigned to new installation and maintenance jobs in the chemical and petro-chemical industries as well as in power plants.



## **DSB SÄUREBAU LEUNA GMBH**

### **DSB Säurebau Leuna GmbH**

For decades already, the DSB Säurebau Leuna GmbH provides a complete offer of products, components and systems as protection for acids, lyes and other aggressive mediums: acid resistant ceramic floorings and container linings, coating systems in accordance with the Water Resources Act, floor- and container coatings based on synthetic resin, concrete protection of thermoplastic and glass fibre reinforced plastics, site rubber coating, coatings for drip trays and collecting rooms, basin seals, kitchen floors.





### ICS adminservice GmbH

ICS adminservice GmbH is a service provider for outsourced business processes founded in 1993. The services in Business Process Outsourcing extend over the whole Human Resources, Finance and Accounting as well as the associated IT systems – Payroll Accounting, Travel Expense Reports and Financial Accounting (German Commercial Code and IFRS/IAS), Treasury Management, Controlling and Business Process Consulting.

ICS adminservice GmbH uses the latest software by leading producers (SAP® ERP, BRZ-HR®, P & I LOGA, MACH ERP, Viatos, HRworks), which it constantly develops together with its partners.

ICS adminservice GmbH is a SAP-certified provider of Business Process Outsourcing services and works for national and international clients with 85 employees at the Leuna and Berlin sites.



### ISO TECHNIK SPÄTH GmbH

The fields of activity of ISO TECHNIK SPÄTH GmbH include predominantly the technical insulation of industrial plants, heating systems and sanitary installations in the building and the metal fabrication industries. The prefabrication takes place in their own workshop with the special machines designed for the machining of thin sheet. An experienced team of 25 technicians oversees the respective projects with the help of high-performance equipment.



### KSB Service GmbH

The services of KSB-Service range from the consulting over planning, installation, maintenance up to holistic service concepts and sustain to the Know-How of a worldwide acting pumps and fittings producer. The KSB service staff maintains and repairs fittings and pump units as well as further Rotating Equipment in industry and chemistry companies, waste water treatment plants, waterworks etc. prompt and professional – independent of manufacturer.



### Mammoet Deutschland GmbH

Mammoet Deutschland GmbH is one of the leading suppliers of heavy assembly, heavy lifting and transport in Germany for more than 25 years. We work for clients in the petrochemical, offshore, power, wind and civil industries. Our core competencies include projects, Europe-wide equipment setting and operational crane rental. The center of our business is time. We support our customers in optimizing and shortening targeted timelines. Innovative engineering, careful planning, and reliable implementation are therefore fundamental components of our daily work. We currently employ around 200 people in our Leuna, Ludwigshafen, Flensburg and Krefeld locations. Long-term master service agreements with TOTAL, BASF, LEUNA-Harze and others prove the safe, flexible and efficient implementation of services.



### MESCOM Leuna GmbH

MESCOM Leuna GmbH operates europe-wide as an EMSR service provider in the fields of the installation and commissioning of complete plants, project, facility management and support services. It has a staff of highly-qualified experts with experience in large European companies and plant knowledge in Leuna.



### Petko GmbH

The main activities of Petko GmbH are in the calibration, service and maintenance of compressors, pumps, turbines and drives. The service also covers plant components for back-up electricity generation. Flexible working methods and innovative solutions guarantee a reduction of equipment down-time charges.



IM AUFTRAG DER ZUKUNFT

#### REMONDIS Industrie Service GmbH & Co. KG

REMONDIS Industrie Service is a reliable partner when it comes to the managing and recycling of hazardous waste. REMONDIS Industrie Service has been offering their industrial, commercial and business customers clean and safe solutions for all types of hazardous waste for over 40 years now. Additionally, REMONDIS Industrie Service uses the combined material streams from customers as raw material and energy sources – and continuously works towards developing innovative recycling processes.

# ROHDE

LEUNA - SPERGAU - HALLE

#### Rohde Kommunikations-, Elektro- und Baugesellschaft mbH

Rohde Kommunikations-, Elektro- und Baugesellschaft mbH offers a wide range of services in the fields of building construction, civil engineering, electrical installations, communications technology, cable television and consumer electronics. Moreover, the company lays and splices optical fiber cables and it also lays and installs medium-voltage cables up to 30 kV. A 24-hour emergency service completes the extensive range of services. The main offices are in Leuna, Spergau and Halle.



#### RITTER Starkstromtechnik Berlin GmbH & Co. KG

RITTER Starkstromtechnik (power engineering) is a mid-sized company with a 75-years old tradition. Today RITTER has more than 500 employees in five locations. As specialist in the area of installation, switchboards, switchgears as well as protection and automation the company is represented worldwide through international sales cooperations. The RITTER Starkstromtechnik recommends as competent partner concerning electricity at the Leuna chemical complex, because it is close to the customer with its services and products.



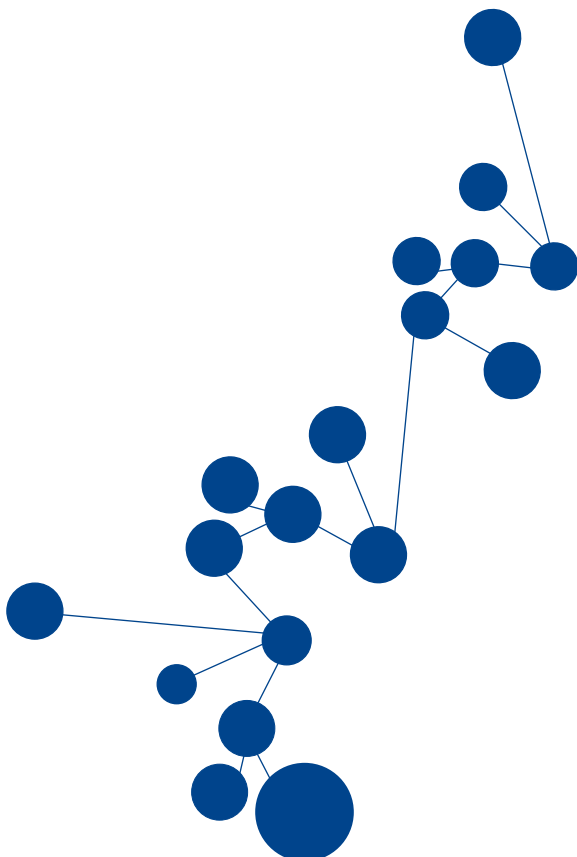
#### Rotan GmbH

Rotan GmbH is a mid-sized company which operates Europe-wide in plant construction. The most important parameters for professional plant construction are high standards for turn-key plants including planning and approval procedures, a high degree of precision of the process control technology and enduring trouble-free, operational reliability. Experienced engineering experts, specially trained mechanics and fitters guarantee the Rotan quality with regard to construction and functionality.

# stadler schAAF

#### Stadler + Schaaf Mess- und Regeltechnik GmbH

Stadler + Schaaf stands for efficiency and quality in switchboard construction, installation, startup and service. With our employees both at home and abroad, we offer solutions for process measuring and control technology, electrical engineering and automation. For more than 35 years, the company has drawn on a specific innovative know-how and its well-established business relations with renowned customers in the medium and large-sized industry.







#### TÜV NORD MPA

TÜV NORD MPA GmbH & Co. KG is one of the leading service providers of materials testing, technical inspection, material use and corrosion prevention, construction and installation surveillance, welding technology, loss assessment, construction materials testing, and quality assurance during construction. To carry out these services, over 100 qualified and competent employees are available to customers at our Leuna, Zwenkau, Bitterfeld, Dessau, Wittenberg, and other locations.



#### Wax Umweltschutz GmbH

Wax Umweltschutz GmbH is a company whose service profile includes industrial cleaning, sewer cleaning, the transport and the disposal of waste. With special-purpose vehicles it is possible to suck liquid, paste-like, dusty and heaped-up (up to 100 mm edge length) media up to a sucking depth of 20 meters. Plants, containers, areas, tube bundles, separators and canals are cleaned with high-pressure water to a pressure level of 1,000 bar.



#### Weber Industrieller Rohrleitungsbau & Anlagenbau Merseburg GmbH & Co. KG

Weber Rohrleitungsbau GmbH & Co. KG is one of the leading suppliers in Germany in the fields of pipeline construction, erection and maintenance of industrial plants. Core sectors are the chemical and petrochemical industry especially providing maintenance services for machines and drives on a 24-hour emergency service basis.



#### WISAG Produktionsservice GmbH

WISAG Produktionsservice GmbH, operating europe-wide, is a subsidiary of WISAG Industrie Service Holding AG. At the Leuna complex they are active in the fields of plant service, plant assembly/steel construction, fabrication of vessels, mechanical fitting and fabrication, and electrical engineering. The range of services includes inter alia full services in the area of maintenance and restoration of fittings, pumps, revision, reparation and maintenance of doors and gates, mechanical- and systems engineering as well as new construction of chemical plants (pipelines, steel construction, EMSR – control engineering).



# RESEARCH FACILITIES ON THE LEUNA CHEMICAL COMPLEX



## Fraunhofer Center for Chemical-Biotechnological processes CBP

The Fraunhofer CBP focuses on the development and combination of biotechnological and chemical processes and bridges the gap between the lab and industrial implementation with its pilot scale technical equipment. By making infrastructure and pilot plants available, as well as highly qualified personnel, the center makes it possible for research and industrial partners to scale biotechnological and chemical processes for the use of renewable and petrochemical raw materials to production relevant dimensions and fast-track process developments. Particularly for small and medium-sized companies, a time and cost-saving opportunity presents itself to scale up new technologies geared towards faster product development and launch.



## GLOBAL BIOENERGIES GmbH

GLOBAL BIOENERGIES is one of the few companies worldwide and the only one in Europe that develops fermentative processes for the transformation of renewable raw materials to hydrocarbons. The company focuses mainly on the biological production of isobutene, one of the most important petrochemical base materials from which fuels, plastics, organic glass, and elastomers can be produced. GLOBAL BIOENERGIES is currently improving the efficiency of this process and conducting test runs in an industrial scale demonstration plant in Germany. Additionally, GLOBAL BIOENERGIES is preparing the implementation of the first large industrial plant in a joint venture with Cristal Union known as 'IBN One'.



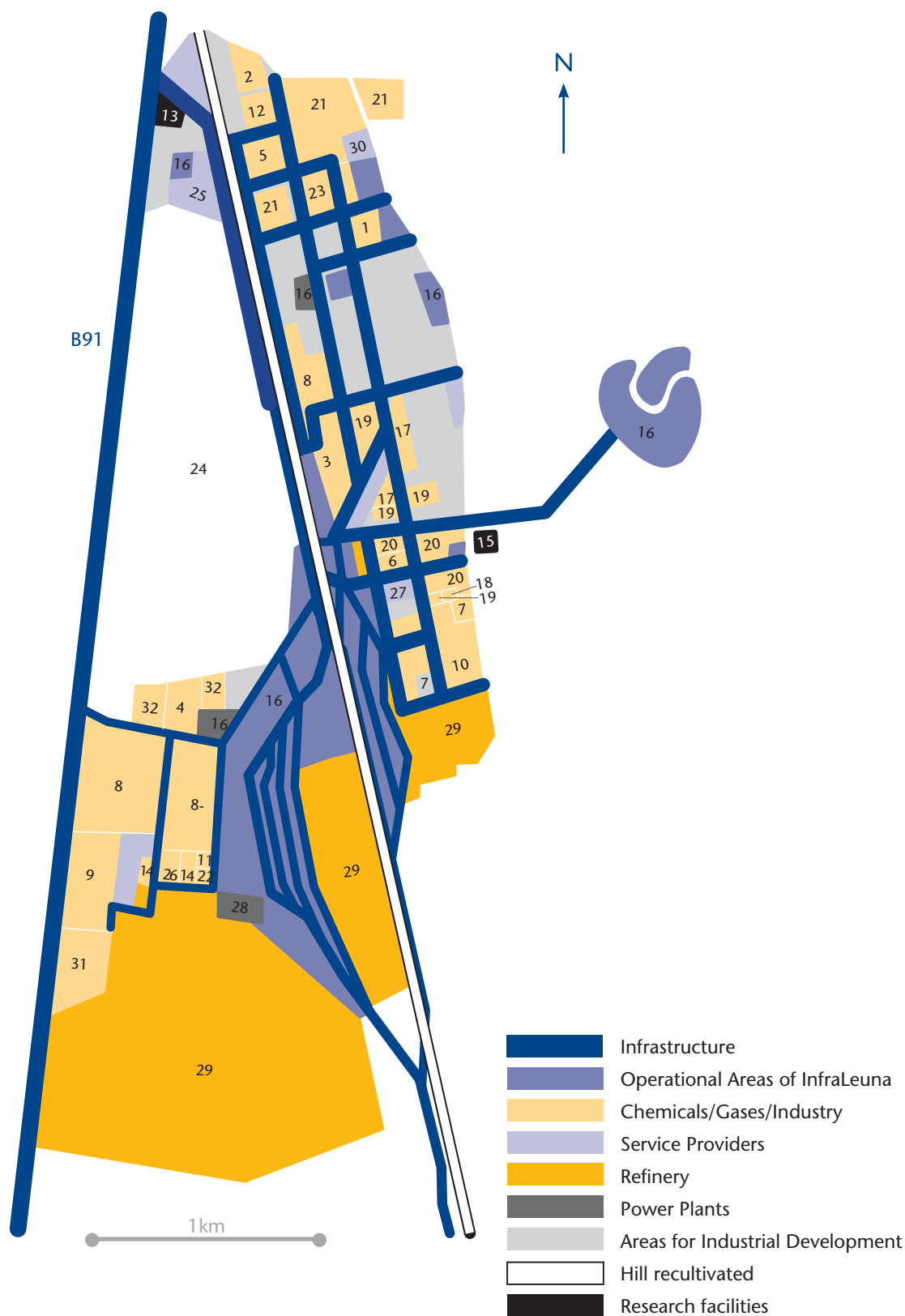
Multifunctional fermentationscascade from 10 l to 10,000 l Bioreactorvolume



## Helmholtz Center for Environmental Research

As an international competence center for environmental sciences, the Helmholtz Center for Environmental Research (UFZ) investigates the complex interactions between the environment and society under the influence of global change. In close cooperation with decision-makers and stakeholders, the more than 1,000 employees at the UFZ locations of Leipzig, Halle and Magdeburg jointly develop solution options concerning the compatibility of developments in society with an intact environment. In summer 2014, a treatment plant for the near-natural cleaning of contaminated groundwater was put into operation as part of the Large-Size Ecological Project of Leuna (ÖGP). This cleaning technique, developed by the UFZ in cooperation with the Landesanstalt für Altlastenfreistellung (Regional Office for the Remediation of Contaminated Sites), allows the removal of contaminants such as benzol and methyl-tert-butylether (MTBE) from more than 600 m<sup>3</sup> of groundwater a day.

# THE LEUNA CHEMICAL COMPLEX

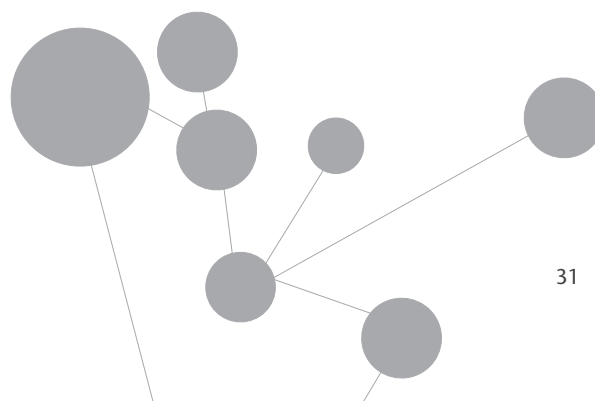




The Area of the Leuna chemical complex covers approx. 1,300 hectares. About 70 hectares are available for new industrial development.

## AT THE SITE YOU CAN FIND AMONGST OTHERS:

- |  |   |
|--|---|
| 1 ADDINOL Lube Oil GmbH  | 18 LCP Leuna Carboxylation Plant GmbH                         |
| 2 AGROFERT Deutschland GmbH  | 19 LEUNA-Harze GmbH   |
| 3 ALBERDINGK BOLEY Leuna GmbH  | 20 LEUNA-Tenside GmbH   |
| 4 Aqualeuna G.m.b.H.   | 21 Linde AG   |
| 5 ARKEMA GmbH  | 22 Lord Germany Feinchemie GmbH                               |
| 6 BASF Leuna GmbH  | 23 MinAscent Leuna Production GmbH                            |
| 7 CRI Catalyst Leuna GmbH  | 24 Mitteldeutsche Sanierungs- und Entsorgungsgesellschaft mbH |
| 8 DOMO Caproleuna GmbH   | 25 MVV Umwelt Asset GmbH                                      |
| 9 Dow Olefinverbund GmbH   | 26 Quadrimex Sulfur Chemicals GmbH & Co. KG                   |
| 10 Eastman Chemical Company  | 27 REMONDIS Industrie Service GmbH & Co. KG                   |
| 11 EW Biotech GmbH   | 28 STEAG GmbH   |
| 12 FP-Pigments GmbH  | 29 TOTAL Raffinerie Mitteldeutschland GmbH                    |
| 13 Fraunhofer-Zentrum für Chemisch-Biotechnologische Prozesse CBP / GLOBAL BIOENERGIES | 30 WAX Umweltschutz GmbH                                      |
| 14 GHC GERLING, HOLZ & CO. Handels GmbH  | 31 WEPA Leuna GmbH  |
| 15 Helmholtz-Zentrum für Umweltforschung GmbH – UFZ                                    | 32 Xentrys Leuna GmbH   |
| 16 InfraLeuna GmbH   |   |
| 17 Innospec Leuna GmbH   |   |





# INFRALEUNA – YOUR SERVICE COMPANY

## UTILITIES

Power: electrical energy, natural gas, steam, compressed air and instrument air, long-distance heating  
Water: raw water, cooling water, drinking water, deionized water, cold water

## INFRASTRUCTURE

Real estate, roads, pipe racks, railroad network, cable trays

## SAFETY AND ENVIRONMENTAL PROTECTION

Fire brigade, site security, site safety, water-, immission- and radiation protection, safety and occupational health

## SERVICES

Logistics, sewage disposal, analytical laboratory services, telecommunications, plant medical services, site development and support for investors, archiving, adaption of industrial standards, engineering



...SO THAT THE  
CHEMISTRY IS ALSO  
RIGHT FOR YOU



## Benefit from InfraLeuna's services to ensure your success!

InfraLeuna GmbH is the owner and operator of the infrastructure facilities at the Leuna complex. InfraLeuna works on a low profit principle. The shares are held by several companies located here.

Our company's philosophy can be summed up in a few words: we create and develop the supporting framework for your production, allowing you to concentrate on your core business.

We offer an attractive range of services including, amongst others the supply of essential utilities such as energy and water.

Various services, for example site security, fire brigade, plant medical services, chemical analysis, sewage disposal and logistics, enable you to work more cost-effectively and efficiently.

Furthermore, InfraLeuna is not just a provider of services but also a site developer. Modern site management, marketing, assistance with your industrial investment, e.g. the support with investment grant applications are areas in which we have significant experience and expertise.

Our acquired Know-How, experience and a team of qualified and motivated employees have already convinced large international chemical groups to locate in Leuna.

InfraLeuna has implemented an integrated management system and is certified in terms of quality, safety, environmental protection and energy efficiency according to international guidelines. InfraLeuna fulfills the strict standards of DIN EN ISO 9001, 14001, 27001, 50001 and SCC-checklist.

# ALL-AROUND SUPPLY

## UTILITIES

### Power

- Operation of various power plants (steam generator, steam turbine, gas turbine)
- Electricity supply to the site through operation and monitoring of the power supply system and switchgear at various voltage levels
- Supply of steam at several pressure levels
- Supply of long-distance heating
- Provision of instrument air in Part II of the site
- Supply of natural gas at various pressure levels
- Operation of a gas and steam power plant

### Water

- Treatment of condensate and provision of deionized water
- Supply and distribution of drinking, fresh, and cooling water from our own treatment plants
- Supply of cold water
- Separate canal systems for contaminated and non-contaminated waste water
- Treatment of waste water in the central biological treatment plant
- Drainage of non-contaminated waste water to discharge system of the Saale River

## INFRASTRUCTURE

### Central Corridor System

- Systematic bundling of the complete infrastructure facilities for the site in form of central corridors

### Roads

- 40 kilometers road network
- Maintenance, management and upkeep of the road network, car parks, security perimeter and the associated lighting, drainage and footpaths

### Pipe Racks

- 20 kilometers pipe racks network
- Operation, monitoring and maintenance of main and auxiliary networks
- Management of the pipe racks of the companies according to standardized technical principles

### Cables

- Planning, maintenance and management of cable trays
- Execution of maintenance and inspection work

### Railroad

- 90 kilometers railroad network with connection to the Deutsche Bahn AG rail network
- Two onsite shunting yards
- Central container trans-shipment centers at the site

### Real Estate

- 65 buildings
- 100,000 m<sup>2</sup> floor space
- Renting/Leasing and management of office and laboratory buildings, workshops, open spaces as well as production facilities and warehouses



## SAFETY AND ENVIRONMENTAL PROTECTION

### **Fire Brigade**

- Disaster prevention with the help of two fire stations, emergency rescue service and technical support
- Fire protection technical consultation

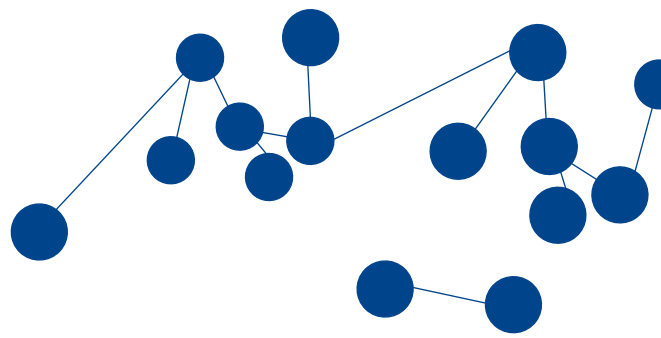
### **Site Safety and Environmental Protection**

- Coordination of the activities for alarm systems and disaster prevention planning
- Consulting in the area of safety and occupational health
- Support with implementing the requirements of the Federal Law for Immission Protection and the Law for Water Supply, as well as the obligations of the radiation protection legislation

### **Site Security**

- Site-related security services such as access-control and patrol services
- Special monitoring and protection
- Administrative tasks (e.g. company ID cards, visitor permits)





## SERVICES

### Logistics

- Management of worldwide transportation using all modes of transport
- Courier and mail services
- Scheduling of transport
- Transport management and monitoring
- Storage and handling services (i.e. container storage area for hazardous goods)
- Management of transportation (freight car, container)
- Tanker and rail tank car internal cleaning
- Maintenance of freight cars
- Tank service
- Shunting service on the Leuna Chemical Complex
- Railway traffic services on the public rail network
- Supervision of the track infrastructure for onsite customers

### Telecommunications

- Provision of telephone connections and connections with telecommunication facilities, including terminal equipment
- Telecommunication services – Unified Communication (UC), Unified Messaging (UM)
- Digital alarm and conference servers
- Provision of broad-band Internet access and IP addresses
- Comprehensive Internet services: webhosting, domains, e-mails
- Provision of transmission paths (VPN, Firewall)
- Server housing and back-up techniques
- Digital TETRA mobile telephony
- Copper cabling (cat 3-7), fiber optic cables (LWL), intelligent WLAN solutions, media technology
- Comprehensive telecommunication services: consulting, planning, installation, maintenance, repairs and billing

### Analytical Laboratory Services

- Accredited test laboratory pursuant to DIN EN ISO/IEC 17025
- Accredited laboratory for drinking water analysis
- Process-related analytical services, including sampling, in the fields of power generation and water supply, as well as water and waste water treatment
- Testing raw materials as well as semi-finished and end products in the course of ongoing manufacturing processes

### Corporate medical service

- Preventative occupational medical care according to the ArbMedVV (Arbeitsmedizinische Vorsorgeverordnung - Preventative Occupational Medical Care Regulation) and/or fitness tests according to the objectives of the DGVU (Deutsche Gesetzliche Unfallversicherung – German Statutory Accident Insurance), as well as further services in accordance with the legal regulations (e.g. Fahrerlaubnisverordnung – Driver's License Regulation)
- Support on all matters concerning health protection

### Site Development

- Planning of the site development

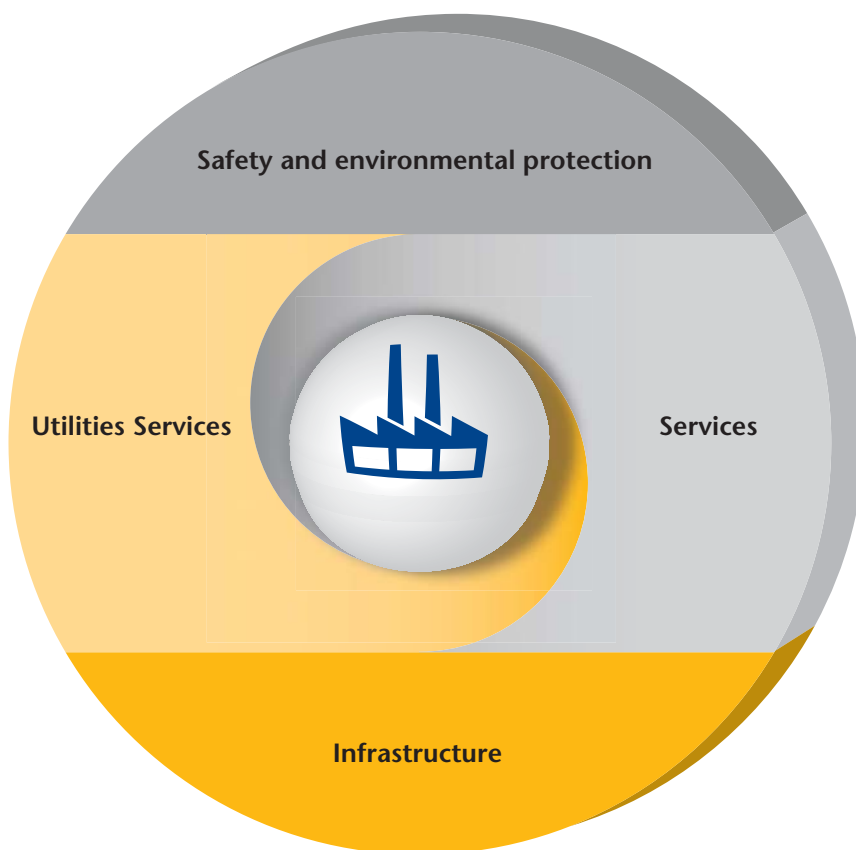
### Archiving

- Creation of archive concepts
- Hard-copy archive
- Electronic archive

### Engineering

- Project coordination for statutory investments, building inspection, and coordination in accordance with the rules for accident prevention
- Administration of the real estate and realty land register as well as the geographical information system (GIS)
- Urban land use planning

## INTEGRATED SERVICE CONCEPT



- Fire brigade, site security, site safety, water-, immission- and radiation protection, safety and occupational health
- Power: electrical energy, natural gas, steam, compressed air and instrument air, long-distance heating  
Water: fresh water, cooling water, drinking water, deionized water, cold water
- Logistics, sewage disposal, analytical laboratory services, telecommunications, plant medical services, site development, archiving, adaption of industrial standards, engineering
- real estate, roads, pipe racks, railway network, cable routes & trays, power grids, steam and water networks, plots of land



Two fire stations on the complex offer 24/7 service.

24 / 7







# PEOPLE & REGION

## OUR REGION

“Everyone to his taste” – this familiar quotation of the great Prussian King Friedrich II is literally part of the air in this region. Whether merchant or student, realist or philosopher, beer-drinker or wine-lover, everyone gets his money’s worth and certainly does not miss out on anything.

Galleries and museums inspire the senses, delightful parks and medieval architectural monuments fascinate the beholder, outstanding libraries, ancient churches and cathedrals provide places of meditation. Countless street cafes and restaurants welcome you to stay for a while.

Whether the G. F. Händel festival or the annual re-enactment of Luther’s wedding, the cathedral of Merseburg, the historical theatre in Bad Lauchstädt or Europe’s longest saltwater Graduation works in Bad Dürrenberg – all of this and more is waiting to be discovered less than 50 kilometers from Leuna.

Real nature awaits you directly outside the factory gates: Leuna is one of biggest garden cities in Europe.



CENTRAL GERMANY  
IS A LIVEABLE REGION  
IN THE HEART OF  
GERMANY.



“Everyone to  
his taste.”

## INDUSTRIAL AND GARDEN CITY

To visit Leuna means to be surprised by old views and new perspectives of Stone Age, Romanesque and Bauhaus. Leuna: a garden city with a state of the art chemical complex beside it.

Leuna has a 6,000 years old settlement history. The historical garden city builds the core of modern Leuna and was founded in the years 1917 to 1927. It is said to be one of the largest European garden city settlements and is the biggest memorial within the Saalekreis Region.

Today the town presents itself as a consistent settlement area with a multifaceted urban planning of public buildings and the appeal of a small town.









## Efficiency

At the Leuna Chemical Complex, InfraLeuna operates a highly flexible combined gas-steam power plant for the generation of power and process steam. The integration of important heat recovery steam generators into the process steam system makes it possible to supply customers in the most efficient and competitive way. InfraLeuna has been awarded the Energy Efficiency Award from the Deutsche Energie Agentur (dena) for its optimization of its medium-pressure steam supply network.



# SUPPORT FOR INVESTORS

## PLUS POINTS FOR LEUNA

You want to produce products and are searching for a suitable site?

The Leuna chemical complex situated in the dynamic, Central German economic region Leipzig-Halle offers you advantages which make the decision easier:

- a complex regional and onsite materials and product network providing outstanding synergy potential
- a need-based adaptable infrastructure which meets high claims of cost efficiency and reliability; this will allow you to noticeably reduce the capital expenditure of your investments in comparison with other sites
- inexpensive services which are geared to the individual needs of your company and which eliminate your non-core activities as far as possible
- a ready and developed site within an enclosed secure industrial complex
- support from authorities e.g. to obtain grants or to accelerate approval processes
- high capability in specialists onsite
- scientific potential due to chemistry-oriented research establishments, universities and colleges in the region Leipzig-Halle
- acceptance of the chemical industry by the local population
- exemption from the hypothetical risk of former contamination
- all-round service for you, when setting up your business at the location – from establishing the initial contact to making proposals for the area layout as well as service and media offers.



## STRATEGY FOR TAKING CARE OF INVESTORS

Typical for the Leuna chemical complex are far-reaching synergies and a pronounced integration between the companies. The network follows this aspect and processes projects along the value chain. Based on this, investors will be approached.

New technologies and processes offer interesting links for a sustainable synergy effect on the Leuna chemical complex. In the recent past, companies in the area of industrial biotechnology as well as producers of fine and specialty chemicals used the advantages of the site and invested in new plants. They bring a significant contribution to the innovative potential of the site. Numerous cooperation partners regionally support this process.

We will support your investments at the Leuna Chemical Complex right from the moment the initial contact has been established. Do let us know your plans regarding setting up business in Leuna and your ideas will guide our actions.

Our qualified personnel will advise you on all matters of setting up business at the location: starting with the optimization of the land proposal and the integration into the site's value-added chain, right through to submitting customized service and media offers to you. We can also assist you in preparing investments in cooperation with public-law partners for business promotion. As part of our site development strategy, we provide support in assessing strategic issues and implementing solutions applying to the chemical complex and its surroundings.

## INVESTMENT PROMOTION

The EU, the federal government as well as the federal state of Saxony-Anhalt provide support programs for industrial investment projects. As an example, the federal state of Saxony-Anhalt supports investments, research and development activities as well as the creation of jobs.

Subsidies are granted on the basis of the relevant general plan of the federal government.

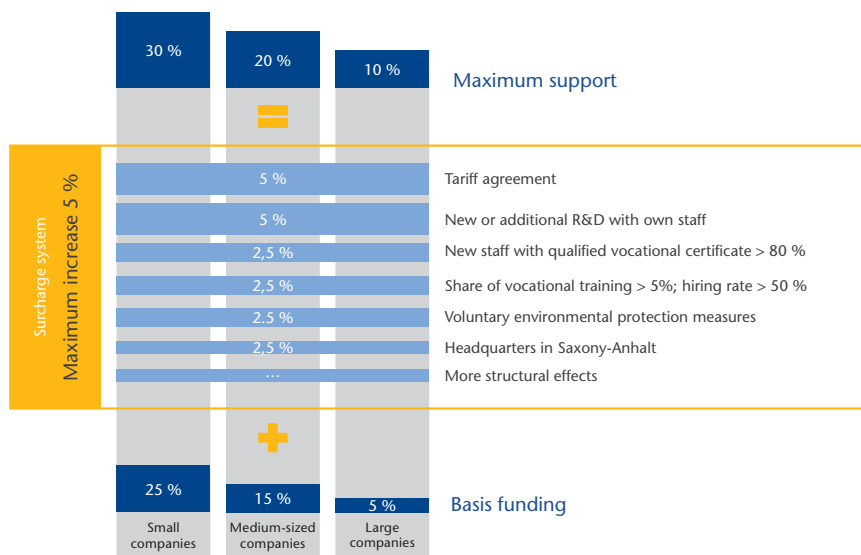
Subsidies from GA-Grants are based on the provisions of the EU financial framework.

The State of Saxony-Anhalt provides GA-Grants for:

- the establishment of a company,
- the expansion of a company,
- the reorganization and fundamental rationalization/ modernization of a company,
- the purchase of a non-operating company or one which is threatened with closure

The amount of the funding depends, inter alia, on the size of the business, whereby smaller and medium-sized companies usually achieving a higher funding quota.

The diagram below illustrates the basic structure of the amount of funding in the federal state of Saxony-Anhalt granted to the Leuna complex (in the Saalekreis district) for the period 2018-2019. The amount of the subsidies granted stems from the basic support and may be further increased in accordance with a surcharge system. Surcharges may amount to a maximum of 5% of the basic support, provided the relevant structural effects are achieved. The diagram shows examples of such structural effects and the related amount/percentage of the surcharge.



Source: RdErl. des MW vom 11.2.2017 21-3231002; Richtlinie über die Gewährung von Zuwendungen aus Mitteln der Gemeinschaftsaufgabe „Verbesserung der regionalen Wirtschaftsstruktur“

In the course of applying for investment grants for your settlement or investment at the Leuna complex we shall support you in planning your project, in structuring the relevant application procedures and in establishing the contact with the ministries and the staff of the investment bank in charge.

You will also find up-to-date information about the support programs on the homepages of the federal state of Saxony-Anhalt ([www.sachsen-anhalt.de](http://www.sachsen-anhalt.de)) and of the Investitionsbank Sachsen-Anhalt ([www.ib-sachsen-anhalt.de](http://www.ib-sachsen-anhalt.de)).

INVESTING NOW  
MEANS INVESTING IN  
THE FUTURE.

# CONTACT

The decision to construct a new chemical production plant is almost similar to the complexity of an M&A transaction. That is why we have built up a team at InfraLeuna which is capable of handling all aspects of this task and has the appropriate experience.

Our employees are experienced in the performance of new and extension investments with international partners and will be competent and committed partners for your experts.

You can contact us at the following numbers:

## **Management Board**

Dr. Christof Günther

Tel.: +49 3461 43-3000

Fax: +49 3461 43-4290

E-Mail: [c.guenther@infraleuna.de](mailto:c.guenther@infraleuna.de)

## **Sales department/**

## **Site development/PR-management**

Martin Naundorf

Tel.: +49 3461 43-4167

Fax: +49 3461 43-3824

E-Mail: [m.naundorf@infraleuna.de](mailto:m.naundorf@infraleuna.de)

If you have any questions, we are at your disposal at the abovementioned numbers.

InfraLeuna GmbH

Am Haupttor

D-06237 Leuna

Web: <http://www.infraleuna.de>



# ANSWERS & OFFERS FROM ONE SOURCE

A special advantage for you as a potential new investor or customer is that all of the multiform and attractive range of services of InfraLeuna will be presented to you through our sales department. They are not just your contact for the initial business contact, but will present price indications and offers and lead the negotiations up to the closing of the contract.

Due to this comprehensive service from one source you benefit from time and efficiency. We attach special importance to a competent, friendly and customer-oriented service.

One of our significant aims is to create optimal basic conditions for your core business as your satisfaction is our first priority. Therefore, we are available for you as a key contact person also after the closing of the contract and ensure thereby a continuous customer care. An efficient invoicing of services based on SAP (in conformity with the contract) is also implicit to us – our accounting team guarantees that for you.

We hope that our service offer meets your interest. The team of our sales department is looking forward to your contact and is at your disposal any time.



# FAMILY-FRIENDLY COMPANY POLICY FOR A SUCCESSFUL FUTURE

The demographic changes in Germany and the related social changes will have long lasting effects on the working environments of today and tomorrow. We proactively approach these changes with our family-oriented company policy. We strongly feel confident to use the change as chance for a safe and successful future.

Within the alliance "Family-friendly Leuna chemical complex" the InfraLeuna and TOTAL Raffinerie Mitteldeutschland provide the service office "Job and Family" at the Leuna chemical complex. Here, all employees of the chemical complex can find advice and active support on all aspects of compatibility of work and family. These include the arrangement of professional childcare, support care giving for family members, assistance concerning housing and much more.

Apart from the funding and support of the relatives of our workforce we also strengthen our efforts to obtain young people who are at the beginning of their career. For them we offer several programs in the area of training, study or career entry. Thereby we cooperate closely with regional schools and universities and present our offers at fairs, the Job&Career website on our homepage or on facebook and YouTube. Moreover we organize career information days regularly at which we actively inform i.e. pupils in our visitors' information center about the Leuna chemical complex and about the career offers in the InfraLeuna-group.

# CONTACT • PRODUCERS (+49 for Germany)

**ADDINOL Lube Oil GmbH**

Tel.: +49-3461 845-0  
Fax: +49-3461 845-555  
www.addinol.de

**AGROFERT Deutschland GmbH**

Tel.: +49-3461 43-2091  
Fax: +49-3461 43-2094  
www.agrofert.de

**ALBERDINGK BOLEY Leuna GmbH**

Tel.: +49-3461 43-930  
Fax: +49-3461 43-9399  
www.alberdingk-boley.de

**Aqualeuna G.m.b.H.**

Tel.: +49-3461 43-2300  
Fax: +49-3461 43-2301  
www.aquafil.com

**ARKEMA GmbH**

Tel.: +49-3461 43-3919  
Fax: +49-3461 43-3142  
www.arkema.com

**BASF Leuna GmbH**

Tel.: +49-3461 43-3872  
Fax: +49-3461 43-3096  
www.basf-leuna.de

**CRI Catalyst Leuna GmbH**

Tel.: +49-3461 43-4384  
Fax: +49-3461 43-3607  
www.cricatalyst.com

**DOMO Caproleuna GmbH**

Tel.: +49-3461 43-2200  
Fax: +49-3461 43-2220  
www.domochemicals.com

**Dow Olefinverbund GmbH**

Tel.: +49-3461 4978-11  
Fax: +49-3461 4978-13  
www.dow.com

**Eastman Chemical Company**

Tel.: +49-3461 43-4502  
Fax: +49-3461 43-6444  
www.eastman.com

**EW Biotech GmbH**

Tel.: +49-3461 43-8585  
Fax: +49-3461 43-8580

**FP-Pigments GmbH**

Tel.: +49-3461 43-7700  
Fax: +49-3461 43-7710  
www.fp-pigments.com

**GHC Gerling Holz & Co. Handels GmbH**

Tel.: +49-40 853123-51  
Fax: +49-40 853123-66  
www.ghc.com

**Innospec Leuna GmbH**

Tel.: +49-3461 43-4065  
Fax: +49-3461 43-4070  
www.innospecinc.com

**LCP Leuna Carboxylation Plant GmbH**

Tel.: +49-3461 43-4351  
Fax: +49-3461 43-4352  
www.lcp-carboxy.com

**LEUNA-Harze GmbH**

Tel.: +49-3461 43-4366  
Fax: +49-3461 43-4574  
www.leuna-harze.de

**LEUNA-Tenside GmbH**

Tel.: +49-3461 43-4554  
Fax: +49-3461 43-6028  
www.leuna-tenside.de

**Linde AG**

Tel.: +49-3461 853-0  
Fax: +49-3461 853-300  
www.linde-gas.de

**Lord Germany Feinchemie GmbH**

Tel.: +49-3461 43-9880  
Fax: +49-3461 43-9899  
www.lord.com

**MinAscent Leuna Production GmbH**

Tel.: +49-3461 43-4535  
Fax: +49-3461 43-4868  
www.minascent.com

**MVV Umwelt Asset GmbH**

Tel.: +49-3461 43-4790  
Fax: +49-3461 43-4791  
www.mvv-umwelt.de

**Quadrimex Sulfur Chemicals GmbH Co. KG**

Tel.: +49-3461 43-9801  
Fax: +49-3461 43-9803  
www.quadrimex.com

**STEAG GmbH**

Tel.: +49-3461 548-2222  
Fax: +49-3461 548-2209  
www.steag.com

**TOTAL Raffinerie Mitteldeutschland GmbH**

Tel.: +49-3461 48-0  
Fax: +49-3461 48-1136  
www.total-raffinerie.de

**WEPA Leuna GmbH**

Tel.: +49-3461 43-1400  
Fax: +49-3461 43-1499  
www.wepa.de

**Xentrys Leuna GmbH**

Tel.: +49-3461 43-2200  
Fax: +49-3461 43-2220  
www.domochemicals.com

## CONTACT • SERVICE PROVIDERS (+49 for Germany)

### **B&G Computer GmbH**

Tel.: +49-3461 43-3330

Fax: +49-3461 43-3333

### **Bilfinger Maintenance GmbH**

Tel.: +49-3461 43-2991

Fax: +49-3461 43-2701

[www.bm.bilfinger.com](http://www.bm.bilfinger.com)

### **Bilfinger OKI Isoliertechnik GmbH**

Tel.: +49-3461 43-2494

Fax: +49-3461 43-2412

[www.oki.bilfinger.com](http://www.oki.bilfinger.com)

### **DSB Säurebau Leuna GmbH**

Tel.: +49-3461 43-5980

Fax: +49-3461 43-5999

[www.dsb-leuna.de](http://www.dsb-leuna.de)

### **ICS adminservice GmbH**

Tel.: +49-3461 2782-0

Fax: +49-3461 519-3088

[www.ics-adminservice.de](http://www.ics-adminservice.de)

### **InfraLeuna GmbH**

Tel.: +49-3461 43-3001

Fax: +49-3461 43-4290

[www.infraleuna.de](http://www.infraleuna.de)

### **ISO TECHNIK SPÄTH GmbH**

Tel.: +49-3461 43-6450

Fax: +49-3461 43-6459

### **KSB Service GmbH**

Tel.: +49-3461 43-2626

Fax: +49-3461 43-2792

### **Mammoet Deutschland GmbH**

Tel.: +49-3461 43-2681

Fax: +49-3461 43-2688

[www.mammoet.com](http://www.mammoet.com)

### **MESCOM Leuna GmbH**

Tel.: +49-3461 43-4743

Fax: +49-3461 43-4744

[www.mescom.de](http://www.mescom.de)

### **Petko GmbH**

Tel.: +49-3461 43-4044

Fax: +49-3461 43-4046

[www.petko-gmbh.de](http://www.petko-gmbh.de)

### **REMONDIS Industrie Service GmbH & Co. KG**

Tel.: +49-3461 43-5363

Fax: +49-3461 43-4638

[www.remondis-industrie-service.de](http://www.remondis-industrie-service.de)

### **RITTER Starkstromtechnik Berlin GmbH & Co. KG, Betriebsstätte Leuna**

Tel.: +49-3461 43-1600

Fax: +49-3461 43-1611

[www.ritter-starkstromtechnik.de](http://www.ritter-starkstromtechnik.de)

### **Rohde Kommunikations-, Elektro- und Baugesellschaft mbH**

Tel.: +49-34446 304-0

Fax: +49-34446 304-19

[www.spergau-rohde.de](http://www.spergau-rohde.de)

### **ROTAN GmbH**

Tel.: +49-3461 8263-0

Fax: +49-3461 8263-10

[www.rotan-gmbh.de](http://www.rotan-gmbh.de)

### **Stadler + Schaaf Mess- und Regeltechnik GmbH**

Tel.: +49-3461 43-6980

Fax: +49-3461 43-6990

[www.stadler-schaaf.de](http://www.stadler-schaaf.de)

### **TÜV NORD MPA**

Tel.: +49-3461 43-4477

Fax: +49-3461 43-4060

[www.tuev-nord-mpa.de](http://www.tuev-nord-mpa.de)

### **Wax Umweltschutz GmbH**

Tel.: +49-3461 43-2841

Fax: +49-3461 43-2843

### **Weber Industrieller Rohrleitungsbau & Anlagenbau Merseburg GmbH & Co. KG**

Tel.: +49-3461 43-3774

Fax: +49-3461 43-3238

[www.weber-unternehmensgruppe.com](http://www.weber-unternehmensgruppe.com)

### **WISAG Produktionsservice GmbH**

Tel.: +49-3461 43-2624

Fax: +49-3461 43-4988

[www.wisag.de](http://www.wisag.de)

## CONTACT • RESEARCH FACILITIES

### **Fraunhofer-Zentrum für Chemisch- Biotechnologische Prozesse CBP**

Tel.: +49-3461 43-9100

Fax: +49-3461 43-9199

[www.cbp.fraunhofer.de](http://www.cbp.fraunhofer.de)

### **GLOBAL BIOENERGIES GmbH**

Tel.: +49-3461 43-9170

[www.global-bioenergies.com](http://www.global-bioenergies.com)

### **Helmholtz-Zentrum für Umweltforschung – UFZ**

Tel.: +49-341 235-1269

Fax: +49-341 235-450819

[www.ufz.de](http://www.ufz.de)



InfraLeuna GmbH • Am Haupttor • D-06237 Leuna



Certified according to DIN EN ISO 9001, 14001, 27001,  
50001 and SCC\*\*

## IMPRINT

Editor: InfraLeuna GmbH

Photos: Horst Fechner, Elke Hofmann, Dr. Wolfgang Kubak, Danny Pockrandt, Wieland Krause,  
Egbert Schmidt, Roman Walczyna, Ralf Lehmann, Christophe Vander Eecken, Michael Siebert,  
Stadt Leipzig, Jungmann Systemtechnik GmbH & Co. KG, Landesarchiv Merseburg, InfraLeuna GmbH

Print: MUNDSCHENK Druck+Medien  
Copy Deadline: 16.04.2018



[www.infraleuna.de](http://www.infraleuna.de)