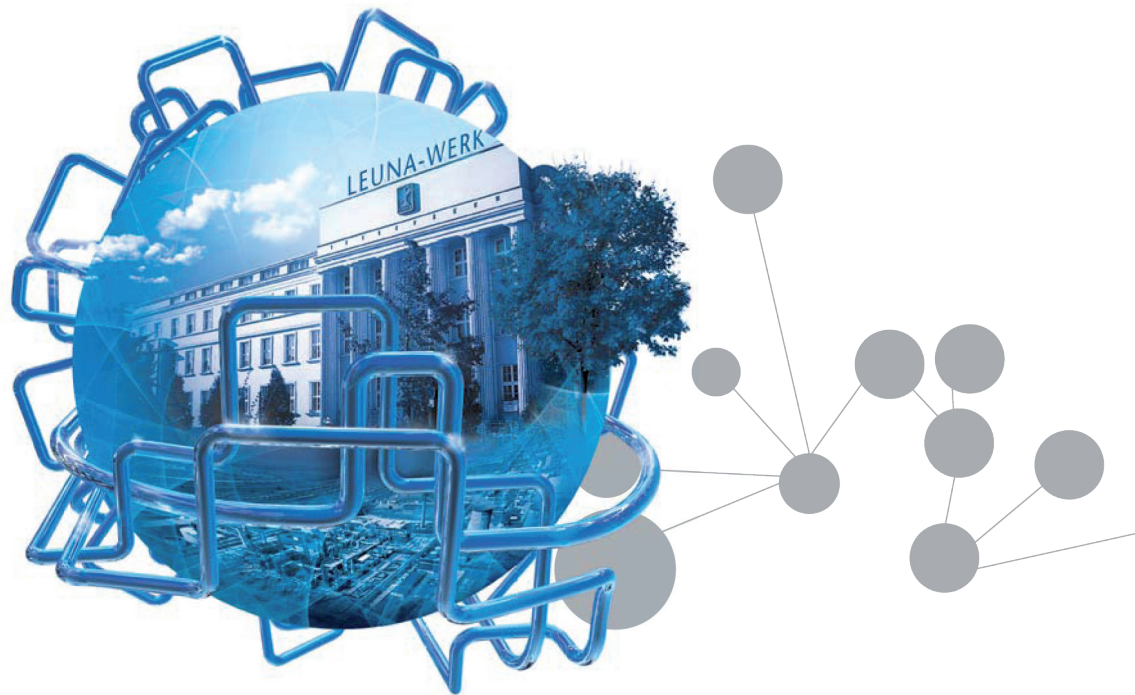




INFRALEUNA®



Engineering technology

Contents

1. Site planning and property administration
2. Geographic Information System (GIS)
3. Investment management

Engineering technology

Engineering services for all site-related planning and technical measures

You already operate at the chemical site and intend to expand your plant or you plan a new settlement in Leuna – our technicians and engineers are at your disposal as central contact partner for all site-specific questions as well as for the preparation and processing of the technical development of your properties and plants.

We are glad to support and advise you regarding the determination of ideal technical solutions and the use of synergistic effects for the integration of your supply and disposal systems into the central infrastructure at the chemical site.

Our services and support for your projects start already within the planning phase and end at the commissioning of your plant.

On request we assist you with our services in the field of investment management and clearing.

Concerning your planning tasks we can provide you with site-relevant technical documentations and cartographical material of our Geographic Information System (GIS).

We also offer to use our GIS for the documentation of your structural works and subsurface facilities.

Holger Groß
Head of Engineering technology
Phone: +49 3461 43-1561
Fax: +49 3461 43-7697
Email: h.grosz@infraleuna.de

Engineering technology

1. Site planning and property administration

Development and coordination of site offers on plots of InfraLeuna GmbH;

Processing of site permissions for measures on InfraLeuna plots ;

Allocation of construction numbers;

Agreement and stipulation of rights of use;

Coordination and processing of plans and measures within the context of approval of public interests;

Keeping the property documents for the chemical site (cadastral units, plots, owner);

Contacts and coordination with the land registry office

Filing of application forms for the performance of official surveys for plots of InfraLeuna GmbH within the framework of property purchase agreements;

Dealing with applications for the registration of building encumbrances and easements on plots of InfraLeuna GmbH;

Analysis, researches and information with regard to questions of site planning and property administration for the chemical site.

2. Geographic Information System (GIS)

Keeping of the digital as-built map for plots of InfraLeuna GmbH in the Geographic Information System;

Provision of the Geographic Information System for onsite companies and investors for the digital documentation of your stocks as e. g. structural equipment, subsurface systems, cable lines, et al.;

Development of cable layouts for the documentation of the territorial location and the cable route, as e. g. electricity, signaling, communication cables;

Drawing up of as-built maps for planning tasks or other applications as dxf-file and plot in any scales;

Handling of permits for excavations on plots of InfraLeuna GmbH and of interested investors;

Provision of maps of the chemical site.

3. Investment management

In preparation of investments:

- advice on choice of materials, fittings, hydrants, condensate drains and similar installations for piping systems according to pipe classes catalogue of InfraLeuna GmbH,
- layout and dimensioning of pipelines; making stationary, hydraulic and thermal calculations;

Technical and commercial project management of investment and large repair tasks in all work phases with:

- basic evaluation

Engineering technology

- development of technical specifications,
- performance of tenders, bidder conferences and award,
- cost monitoring and control,
- building inspection and coordination of outside companies,
- obtaining of project-related permits and approvals,
- organization of safety instructions and inspections,
- acceptance of construction work including defect and residual performance control,
- handover and checking of documentation;

Comprehensive clearing and demolition management for plots, buildings and fundamentals in preparation of investments;

Building inspection for construction and demolition works in contaminated sectors with qualified personnel according to BGR 128 (BGR = regulations of the professional association);

Support on the preparation of the necessary approval documents.